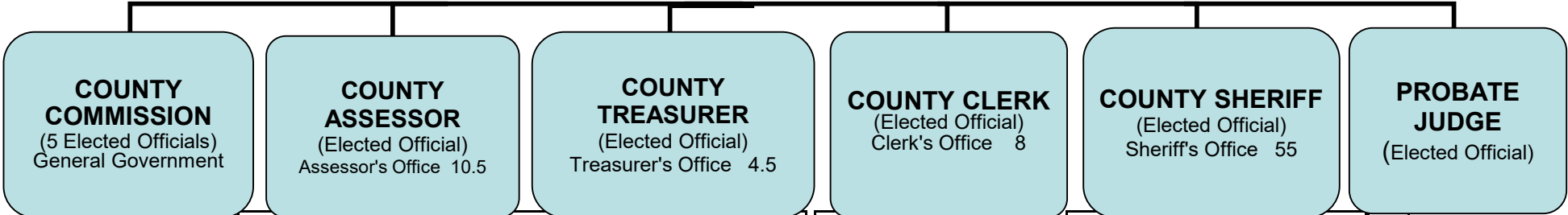


CHART A
 CHAVES COUNTY GOVERNMENT
 ORGANIZATIONAL STRUCTURE &
 MANPOWER ALLOCATION
FY 24-25
EFFECTIVE 07/08/2024



Chief Deputy	1
Administration	5.5
Deputy Assessor	3.5
Assessors Office Administrator	1
GIS Parcel Mapper	1
Property Appraisal	4
Chief Appraiser	1
Appraiser	3

Chief Deputy	1
Senior Accountant	1
Deputy Treasurer	2.5

Chief Deputy	1
B.O.E. Chief	1
B.O.E. Deputy	1
Recording & Filing	1
Probate Clerk Deputy	1
Deputy Clerk	3

Chief Deputy	1
Administration	16
Sheriff's Administrator	1
Lieutenant	4
Public Records (IPRA) Clerk	1
Animal Control Officer	2
Civil Process Server	2
Property & Evidence	1
Sheriff Clerk	4
Civil Records Assistant	1
Patrol/Investigation	38
Sergeant	4
Deputy Patrol	20
Deputy SRO	2
Desk Deputy	1
CID	4
Court Security/Transports	5
Civil	2

Total Elected Officials 10			
Commissioners	5	Probate Judge	1
Sheriff	1	Assessor	1
Clerk	1	Treasurer	1
Chaves County Government Employees			
Total Authorized Positions		254	
Commission Employees		176	
Elected Official Employees		78	

County Commission
(5 Elected Officials)
General Government

General Administration 175
County Manager 1

Detention Division 84

Detention Administration 17

Detention Administrator	1
Chief of Security/Major	1
Administration Lieutenant	1
Safety/Compliance Lieutenant	1
Detention Lieutenant	4
Office Administrator	1
Administrative Assistant	2
Detention Clerk	6

Detention 67

Sergeant	7
Sergeant-Training	1
Corporal	4
Detention Officer	55

General Government 9

Human Resources 3

HR Director	1
HR Generalist	1
Public Records Coordinator	1

Purchasing 1

I.T. Department 4

I.T. Director	1
Senior System Administrator	1
I.T. Tech	2

County Manager Oversees

Safety & Compliance Mgr	1
-------------------------	---

Finance Division 14

Finance 4

Chief Finance Officer	1
Asst Finance Director	1
Senior Accountant	1
Finance Officer	1

IHC 2

Health Care Dir/Internal Auditor	1
Eligibility Officer	1

Community Development 8

Continuum/DWI Coordinator	1
DWI/Court Services Tech	1
Project Specialist	1
Court Compliance Supervisor	1
Court Compliance Officer	3
Community Service Tech	1

Public Services Division 68

Public Services 2

Public Services Director	1
Public Services Admin. Assistant	1

Road Department 44

Road Operations Director	1
Road Technical Supervisor	1
Asst. Engineering Tech.	1
Purchasing Officer	1
Executive Assistant	1

Road Shop 7

Fleet Maint. Supervisor	1
Auto Mechanic	1
Diesel Mechanic	3
Welder	1
Tire Specialist	1

Road Solid Waste 2

Road Maint. I	2
---------------	---

Vector Control 0.5

Road Maint II	0.5
---------------	-----

Construction & Maint. 29.5

Road Foreman	2
Road Maint. II	17.5
Road Maint. I	10

Facility Maintenance 16

Facility Maintenance Director	1
Facility Maintenance Foreman	1
Facility Maintenance Lead Tech-Detention	1
HVAC Tech	1
Facility Maintenance	1
Facility Maintenance Detention	2
Facility Maintenance Admin. Assistant	1
Groundskeeper	2
Custodian	6

Planning and Zoning 6

P&Z Director	1
Bldg Inspector/Code Enforcement Officer	1
Electrial Inspector/Code Enforcement Officer	1
Mechanical & Plumbing Inspector	1
Assistant Planner	1
P&Z Administrative Assistant	1

Public Services Director Oversees

CHART A-1
CHAVES COUNTY GOVERNMENT
ORGANIZATIONAL STRUCTURE &
MANPOWER ALLOCATION
FY 24-25
EFFECTIVE DATE 07/08/2024

CHAVES COUNTY GOVERNMENT EMPLOYEES	
TOTAL AUTHORIZED POSITIONS	254
COMMISSION EMPLOYEES	176
ELECTED OFFICIAL EMPLOYEES	78

Flood Control 12

CHART B - EFFECTIVE 07/08/2024

GENERAL WAGE & POSITION CLASSIFICATION CHART FY 24/25

WAGE LEVEL	WAGE AMOUNT	GENERAL GOVERNMENT	ROAD	DETENTION	TREASURER	ASSESSOR	CLERK	SHERIFF	FLOOD
N	\$57,844.80-\$86,840.00 \$27.81-\$41.75/HR	Safety & Compliance Manager (E)				Chief Appraiser (E)			
M	\$53,560.00-\$76,897.60 \$25.75-\$36.97/HR	Building Inspector/Code Enforcement Officer (E), Electrical Inspector/Code Enforcement Officer (E), Mechanical & Plumbing Inspector (E)							
L	\$46,321.60-\$69,659.20 \$22.27-\$33.49/HR	Court Compliance Supervisor (E), FM Foreman				GIS Parcel Mapper (E)	BOE Chief (E)		
K	\$45,198.40-\$67,828.80 \$21.73-\$32.61/HR		Executive Assistant						Executive Assistant
J	\$44,075.20-\$66,352.00 \$21.19-\$31.90/HR	DWI Program Coordinator (E), FM Lead Technician							
I	\$43,014.40-\$64,584.00 \$20.68-\$31.05/HR	HR Generalist, HVAC Technician, Senior Accountant, Public Records (IPRA) Coordinator			Senior Accountant				
H	\$40,934.40-\$61,443.20 \$19.68-\$29.54/HR	Project Specialist, Assistant Planner		Office Administrator		Assessor's Office Administrator			
G	\$38,958.40-\$58,406.40 \$18.73-\$28.08/HR	Court Compliance Officer						Public Records (IPRA) Clerk	
F	\$36,171.20-\$54,225.60 \$17.39-\$26.07/HR					Appraiser			
E	\$35,297.60-\$52,977.60 \$16.97-\$25.47/HR	Admin. Assistant P&Z, Admin. Assistant FM, Admin. Assistant Public Services, Finance Officer		Admin. Assistant				Property & Evidence Custodian	
D	\$34,424.00-\$52,811.20 \$16.55-\$25.39/HR			Detention Clerk			BOE Deputy, Recording & Filing Supervisor	Animal Control Officer, Civil Process Server, Civil Records Assistant, Sheriff Clerk	
C	\$33,113.60-\$50,793.60 \$15.92-\$24.42/HR				Deputy Treasurer	Deputy Assessor	Deputy Clerk, Probate Clerk Deputy		
B	\$32,240.00-\$48,859.20 \$15.50-\$23.49/HR	Eligibility Officer, Community Service Tech, DWI/Court Services Tech, Groundskeeper							
A	\$31,200.00-\$42,515.20 \$15.00-\$20.44/HR	Custodian							

AT-WILL POSITIONS	
County Manager	Facility Maintenance Director
Public Services Director	Road Operations Director
Chief Financial Officer	Chief of Security/Major
Detention Administrator	Healthcare Director/Financial
Flood Superintendent	Internal Auditor
Human Resources Director	Assistant Finance Director
IT Director	Purchasing Director
Planning & Zoning Director	Sheriff's Administrator
	(Appointed by Sheriff)

Legend:
 (E) Exempt Position
 At-Will-Appointed, serves at the pleasure of the County Manager or Elected Official

**CHAVES COUNTY GENERAL WAGE SCHEDULE
CHART C**

Effective Date: July 8, 2024

Level	Pay Type	Step 1	Step 2	Step 3	Step 4	Step 5	Step 6	Step 7	Step 8	Step 9	Step 10	Step 11	Step 12	Step 13	Step 14	Step 15	Step 16	Step 17	Step 18
	ANNUAL	57,844.80	59,550.40	61,256.00	62,961.60	64,667.20	66,372.80	68,078.40	69,784.00	71,489.60	73,195.20	74,900.80	76,606.40	78,312.00	80,017.60	81,723.20	83,428.80	85,134.40	86,840.00
N	BI-WEEKLY	2,224.80	2,290.40	2,356.00	2,421.60	2,487.20	2,552.80	2,618.40	2,684.00	2,749.60	2,815.20	2,880.80	2,946.40	3,012.00	3,077.60	3,143.20	3,208.80	3,274.40	3,340.00
	HOURLY	27.81	28.63	29.45	30.27	31.09	31.91	32.73	33.55	34.37	35.19	36.01	36.83	37.65	38.47	39.29	40.11	40.93	41.75
	ANNUAL	53,560.00	54,932.80	56,305.60	57,678.40	59,051.20	60,424.00	61,796.80	63,169.60	64,542.40	65,915.20	67,288.00	68,660.80	70,033.60	71,406.40	72,779.20	74,152.00	75,524.80	76,897.60
M	BI-WEEKLY	2,060.00	2,112.80	2,165.60	2,218.40	2,271.20	2,324.00	2,376.80	2,429.60	2,482.40	2,535.20	2,588.00	2,640.80	2,693.60	2,746.40	2,799.20	2,852.00	2,904.80	2,957.60
	HOURLY	25.75	26.41	27.07	27.73	28.39	29.05	29.71	30.37	31.03	31.69	32.35	33.01	33.67	34.33	34.99	35.65	36.31	36.97
	ANNUAL	46,321.60	47,694.40	49,067.20	50,440.00	51,812.80	53,185.60	54,558.40	55,931.20	57,304.00	58,676.80	60,049.60	61,422.40	62,795.20	64,168.00	65,540.80	66,913.60	68,286.40	69,659.20
L	BI-WEEKLY	1,781.60	1,834.40	1,887.20	1,940.00	1,992.80	2,045.60	2,098.40	2,151.20	2,204.00	2,256.80	2,309.60	2,362.40	2,415.20	2,468.00	2,520.80	2,573.60	2,626.40	2,679.20
	HOURLY	22.27	22.93	23.59	24.25	24.91	25.57	26.23	26.89	27.55	28.21	28.87	29.53	30.19	30.85	31.51	32.17	32.83	33.49
	ANNUAL	45,198.40	46,529.60	47,860.80	49,192.00	50,523.20	51,854.40	53,185.60	54,516.80	55,848.00	57,179.20	58,510.40	59,841.60	61,172.80	62,504.00	63,835.20	65,166.40	66,497.60	67,828.80
K	BI-WEEKLY	1,738.40	1,789.60	1,840.80	1,892.00	1,943.20	1,994.40	2,045.60	2,096.80	2,148.00	2,199.20	2,250.40	2,301.60	2,352.80	2,404.00	2,455.20	2,506.40	2,557.60	2,608.80
	HOURLY	21.73	22.37	23.01	23.65	24.29	24.93	25.57	26.21	26.85	27.49	28.13	28.77	29.41	30.05	30.69	31.33	31.97	32.61
	ANNUAL	44,075.20	45,385.60	46,696.00	48,006.40	49,316.80	50,627.20	51,937.60	53,248.00	54,558.40	55,868.80	57,179.20	58,489.60	59,800.00	61,110.40	62,420.80	63,731.20	65,041.60	66,352.00
J	BI-WEEKLY	1,695.20	1,745.60	1,796.00	1,846.40	1,896.80	1,947.20	1,997.60	2,048.00	2,098.40	2,148.80	2,199.20	2,249.60	2,300.00	2,350.40	2,400.80	2,451.20	2,501.60	2,552.00
	HOURLY	21.19	21.82	22.45	23.08	23.71	24.34	24.97	25.60	26.23	26.86	27.49	28.12	28.75	29.38	30.01	30.64	31.27	31.90
	ANNUAL	43,014.40	44,283.20	45,552.00	46,820.80	48,089.60	49,358.40	50,627.20	51,896.00	53,164.80	54,433.60	55,702.40	56,971.20	58,240.00	59,508.80	60,777.60	62,046.40	63,315.20	64,584.00
I	BI-WEEKLY	1,654.40	1,703.20	1,752.00	1,800.80	1,849.60	1,898.40	1,947.20	1,996.00	2,044.80	2,093.60	2,142.40	2,191.20	2,240.00	2,288.80	2,337.60	2,386.40	2,435.20	2,484.00
	HOURLY	20.68	21.29	21.90	22.51	23.12	23.73	24.34	24.95	25.56	26.17	26.78	27.39	28.00	28.61	29.22	29.83	30.44	31.05
	ANNUAL	40,934.40	42,140.80	43,347.20	44,553.60	45,760.00	46,966.40	48,172.80	49,379.20	50,585.60	51,792.00	52,998.40	54,204.80	55,411.20	56,617.60	57,824.00	59,030.40	60,236.80	61,443.20
H	BI-WEEKLY	1,574.40	1,620.80	1,667.20	1,713.60	1,760.00	1,806.40	1,852.80	1,899.20	1,945.60	1,992.00	2,038.40	2,084.80	2,131.20	2,177.60	2,224.00	2,270.40	2,316.80	2,363.20
	HOURLY	19.68	20.26	20.84	21.42	22.00	22.58	23.16	23.74	24.32	24.90	25.48	26.06	26.64	27.22	27.80	28.38	28.96	29.54
	ANNUAL	38,958.40	40,102.40	41,246.40	42,390.40	43,534.40	44,678.40	45,822.40	46,966.40	48,110.40	49,254.40	50,398.40	51,542.40	52,686.40	53,830.40	54,974.40	56,118.40	57,262.40	58,406.40
G	BI-WEEKLY	1,498.40	1,542.40	1,586.40	1,630.40	1,674.40	1,718.40	1,762.40	1,806.40	1,850.40	1,894.40	1,938.40	1,982.40	2,026.40	2,070.40	2,114.40	2,158.40	2,202.40	2,246.40
	HOURLY	18.73	19.28	19.83	20.38	20.93	21.48	22.03	22.58	23.13	23.68	24.23	24.78	25.33	25.88	26.43	26.98	27.53	28.08
	ANNUAL	36,171.20	37,252.80	38,334.40	39,416.00	40,497.60	41,579.20	42,660.80	43,742.40	44,824.00	45,905.60	46,987.20	48,068.80	49,150.40	50,232.00	51,313.60	52,395.20	53,476.80	54,558.40
F	BI-WEEKLY	1,391.20	1,432.80	1,473.60	1,514.40	1,555.20	1,596.00	1,636.80	1,677.60	1,718.40	1,759.20	1,800.00	1,840.80	1,881.60	1,922.40	1,963.20	2,004.00	2,044.80	2,085.60
	HOURLY	17.39	17.91	18.42	18.93	19.44	19.95	20.46	20.97	21.48	21.99	22.50	23.01	23.52	24.03	24.54	25.05	25.56	26.07
	ANNUAL	35,297.60	36,337.60	37,377.60	38,417.60	39,457.60	40,497.60	41,537.60	42,577.60	43,617.60	44,657.60	45,697.60	46,737.60	47,777.60	48,817.60	49,857.60	50,897.60	51,937.60	52,977.60
E	BI-WEEKLY	1,357.60	1,397.60	1,437.60	1,477.60	1,517.60	1,557.60	1,597.60	1,637.60	1,677.60	1,717.60	1,757.60	1,797.60	1,837.60	1,877.60	1,917.60	1,957.60	1,997.60	2,037.60
	HOURLY	16.97	17.47	17.97	18.47	18.97	19.47	19.97	20.47	20.97	21.47	21.97	22.47	22.97	23.47	23.97	24.47	24.97	25.47
	ANNUAL	34,424.00	35,505.60	36,587.20	37,668.80	38,750.40	39,832.00	40,913.60	41,995.20	43,076.80	44,158.40	45,240.00	46,321.60	47,403.20	48,484.80	49,566.40	50,648.00	51,729.60	52,811.20
D	BI-WEEKLY	1,324.00	1,365.60	1,407.20	1,448.80	1,490.40	1,532.00	1,573.60	1,615.20	1,656.80	1,698.40	1,740.00	1,781.60	1,823.20	1,864.80	1,906.40	1,948.00	1,989.60	2,031.20
	HOURLY	16.55	17.07	17.59	18.11	18.63	19.15	19.67	20.19	20.71	21.23	21.75	22.27	22.79	23.31	23.83	24.35	24.87	25.39
	ANNUAL	33,113.60	34,153.60	35,193.60	36,233.60	37,273.60	38,313.60	39,353.60	40,393.60	41,433.60	42,473.60	43,513.60	44,553.60	45,593.60	46,633.60	47,673.60	48,713.60	49,753.60	50,793.60
C	BI-WEEKLY	1,273.60	1,313.60	1,353.60	1,393.60	1,433.60	1,473.60	1,513.60	1,553.60	1,593.60	1,633.60	1,673.60	1,713.60	1,753.60	1,793.60	1,833.60	1,873.60	1,913.60	1,953.60
	HOURLY	15.92	16.42	16.92	17.42	17.92	18.42	18.92	19.42	19.92	20.42	20.92	21.42	21.92	22.42	22.92	23.42	23.92	24.42
	ANNUAL	32,240.00	33,217.60	34,195.20	35,172.80	36,150.40	37,128.00	38,105.60	39,083.20	40,060.80	41,038.40	42,016.00	42,993.60	43,971.20	44,948.80	45,926.40	46,904.00	47,881.60	48,859.20
B	BI-WEEKLY	1,240.00	1,277.60	1,315.20	1,352.80	1,390.40	1,428.00	1,465.60	1,503.20	1,540.80	1,578.40	1,616.00	1,653.60	1,691.20	1,728.80	1,766.40	1,804.00	1,841.60	1,879.20
	HOURLY	15.50	15.97	16.44	16.91	17.38	17.85	18.32	18.79	19.26	19.73	20.20	20.67	21.14	21.61	22.08	22.55	23.02	23.49
	ANNUAL	31,200.00	31,865.60	32,531.20	33,196.80	33,862.40	34,528.00	35,193.60	35,859.20	36,524.80	37,190.40	37,856.00	38,521.60	39,187.20	39,852.80	40,518.40	41,184.00	41,849.60	42,515.20
A	BI-WEEKLY	1,200.00	1,225.60	1,251.20	1,276.80	1,302.40	1,328.00	1,353.60	1,379.20	1,404.80	1,430.40	1,456.00	1,481.60	1,507.20	1,532.80	1,558.40	1,584.00	1,609.60	1,635.20
	HOURLY	15.00	15.32	15.64	15.96	16.28	16.60	16.92	17.24	17.56	17.88	18.20	18.52	18.84	19.16	19.48	19.80	20.12	20.44

Safety & Compliance Manager, Chief Appraiser

Building Inspector/Code Enforcement Officer, Electrical Inspector/Code Enforcement Officer, Mechanical & Plumbing Inspector

GIS Parcel Mapper, BOE Chief, Court Compliance Supervisor, FM Foreman

Executive Assistant

DWI Program Coordinator, FM Lead Technician

Human Resources Generalist, HVAC Technician, Senior Accountant, Public Records (IPRA) Coordinator

Assistant Planner, Office Administrator (Detention), Assessor's Office Administrator, Project Specialist

Court Compliance Officer, Public Records (IPRA) Clerk

Appraiser

Admin. Assistant, Property & Evidence Custodian, Finance Officer

BOE Deputy, Animal Control Officer, Civil Process Server, Detention Clerk, Recording & Filing Supervisor, Sheriff Clerk, Civil Records Assistant

Deputy Assessor, Deputy Clerk, Deputy Treas, FM, Probate Clerk Deputy

Eligibility Officer, Community Service Tech, DWI/Court Services Tech, Groundskeeper

Custodian

**CHAVES COUNTY
LEO WAGE SCHEDULE
CHART D
EFFECTIVE DATE: January 22, 2024**

Level	Pay Type	Step 1	Step 2	Step 3	Step 4	Step 5	Step 6	Step 7	Step 8	Step 9	Step 10	Step 11	Step 12	Step 13	Step 14	Step 15
(L)	ANNUAL	74,027.20	76,668.80	79,310.40	81,952.00	84,593.60	87,235.20	89,876.80	92,518.40	95,160.00	97,801.60	100,443.20	103,084.80	105,726.40	108,368.00	111,009.60
Lieutenant	BI-WEEKLY	2,847.20	2,948.80	3,050.40	3,152.00	3,253.60	3,355.20	3,456.80	3,558.40	3,660.00	3,761.60	3,863.20	3,964.80	4,066.40	4,168.00	4,269.60
(Exempt)	HOURLY	35.59	36.86	38.13	39.40	40.67	41.94	43.21	44.48	45.75	47.02	48.29	49.56	50.83	52.10	53.37

Level	Pay Type	Step 1	Step 2	Step 3	Step 4	Step 5	Step 6	Step 7	Step 8	Step 9	Step 10	Step 11	Step 12	Step 13	Step 14	Step 15
(S)	ANNUAL	59,280.00	61,380.80	63,481.60	65,582.40	67,683.20	69,784.00	71,884.80	73,985.60	76,086.40	78,187.20	80,288.00	82,388.80	84,489.60	86,590.40	88,691.20
Sergeant	BI-WEEKLY	2,280.00	2,360.80	2,441.60	2,522.40	2,603.20	2,684.00	2,764.80	2,845.60	2,926.40	3,007.20	3,088.00	3,168.80	3,249.60	3,330.40	3,411.20
	HOURLY	28.50	29.51	30.52	31.53	32.54	33.55	34.56	35.57	36.58	37.59	38.60	39.61	40.62	41.63	42.64

Level	Pay Type	Step 1	Step 2	Step 3	Step 4	Step 5	Step 6	Step 7	Step 8	Step 9	Step 10	Step 11	Step 12	Step 13	Step 14	Step 15
(D)	ANNUAL	46,300.80	47,954.40	49,608.00	51,261.60	52,915.20	54,568.80	56,222.40	57,876.00	59,529.60	61,183.20	62,836.80	64,490.40	66,144.00	67,797.60	69,451.20
Deputy	BI-WEEKLY	1,780.80	1,844.40	1,908.00	1,971.60	2,035.20	2,098.80	2,162.40	2,226.00	2,289.60	2,353.20	2,416.80	2,480.40	2,544.00	2,607.60	2,671.20
	HOURLY	22.26	23.06	23.85	24.65	25.44	26.24	27.03	27.83	28.62	29.42	30.21	31.01	31.80	32.60	33.39

Note: All promotions move up the chart to the proper level to a step with a rate no less than the previous compensation amount. Demotions move straight down.

Lieutenant position is Exempt.

**CHAVES COUNTY
DETENTION WAGE SCHEDULE
CHART E**

EFFECTIVE DATE: January 22, 2024

<i>(EXEMPT POSITIONS)</i>			Step 1	Step 2	Step 3	Step 4	Step 5	Step 6	Step 7	Step 8	Step 9	Step 10	Step 11	Step 12	Step 13	Step 14	Step 15
Level (DL) LIEUTENANT, ADMIN. LIEUTENANT SAFETY/COMPLIANCE LIEUTENANT	Pay Type																
	ANNUAL	55,057.60	57,023.20	58,988.80	60,954.40	62,920.00	64,885.60	66,851.20	68,816.80	70,782.40	72,748.00	74,713.60	76,679.20	78,644.80	80,610.40	82,576.00	
	BI-WEEKLY	2,117.60	2,193.20	2,268.80	2,344.40	2,420.00	2,495.60	2,571.20	2,646.80	2,722.40	2,798.00	2,873.60	2,949.20	3,024.80	3,100.40	3,176.00	
	HOURLY	26.47	27.42	28.36	29.31	30.25	31.20	32.14	33.09	34.03	34.98	35.92	36.87	37.81	38.76	39.70	
Level (DS) SERGEANT, SERGEANT TRAINER	Pay Type																
	ANNUAL	46,321.60	47,975.20	49,628.80	51,282.40	52,936.00	54,589.60	56,243.20	57,896.80	59,550.40	61,204.00	62,857.60	64,511.20	66,164.80	67,818.40	69,472.00	
	BI-WEEKLY	1,781.60	1,845.20	1,908.80	1,972.40	2,036.00	2,099.60	2,163.20	2,226.80	2,290.40	2,354.00	2,417.60	2,481.20	2,544.80	2,608.40	2,672.00	
	HOURLY	22.27	23.07	23.86	24.66	25.45	26.25	27.04	27.84	28.63	29.43	30.22	31.02	31.81	32.61	33.40	
Level (DC) CORPORAL	Pay Type																
	ANNUAL	39,936.00	41,371.20	42,806.40	44,241.60	45,676.80	47,112.00	48,547.20	49,982.40	51,417.60	52,852.80	54,288.00	55,723.20	57,158.40	58,593.60	60,028.80	
	BI-WEEKLY	1,536.00	1,591.20	1,646.40	1,701.60	1,756.80	1,812.00	1,867.20	1,922.40	1,977.60	2,032.80	2,088.00	2,143.20	2,198.40	2,253.60	2,308.80	
	HOURLY	19.20	19.89	20.58	21.27	21.96	22.65	23.34	24.03	24.72	25.41	26.10	26.79	27.48	28.17	28.86	
Level (DO) OFFICER	Pay Type																
	ANNUAL	37,086.40	38,417.60	39,748.80	41,080.00	42,411.20	43,742.40	45,073.60	46,404.80	47,736.00	49,067.20	50,398.40	51,729.60	53,060.80	54,392.00	55,723.20	
	BI-WEEKLY	1,426.40	1,477.60	1,528.80	1,580.00	1,631.20	1,682.40	1,733.60	1,784.80	1,836.00	1,887.20	1,938.40	1,989.60	2,040.80	2,092.00	2,143.20	
	HOURLY	17.83	18.47	19.11	19.75	20.39	21.03	21.67	22.31	22.95	23.59	24.23	24.87	25.51	26.15	26.79	

Note: All promotions move up the chart to the proper level to a step with a rate no less than the previous compensation amount. Demotions move straight down. Pay increases annually moving forward a step. Lieutenant positions are Exempt.

**CHAVES COUNTY
INFORMATION TECHNOLOGIES WAGE SCHEDULE
CHART F**

EFFECTIVE DATE: January 8, 2024

Level	Pay Type	Step 1	Step 2	Step 3	Step 4	Step 5	Step 6	Step 7	Step 8	Step 9	Step 10	Step 11	Step 12	Step 13	Step 14	Step 15
(ITS) Senior System Admin	ANNUAL	62,275.20	64,480.00	66,684.80	68,889.60	71,094.40	73,299.20	75,504.00	77,708.80	79,913.60	82,118.40	84,323.20	86,528.00	88,732.80	90,937.60	93,142.40
	BI-WEEKLY	2,395.20	2,480.00	2,564.80	2,649.60	2,734.40	2,819.20	2,904.00	2,988.80	3,073.60	3,158.40	3,243.20	3,328.00	3,412.80	3,497.60	3,582.40
	HOURLY	29.94	31.00	32.06	33.12	34.18	35.24	36.30	37.36	38.42	39.48	40.54	41.6	42.66	43.72	44.78
(ITT) IT Tech	ANNUAL	41,953.60	44,075.20	46,196.80	48,318.40	50,440.00	52,561.60	54,683.20	56,804.80	58,926.40	61,048.00	63,169.60	65,291.20	67,412.80	69,534.40	71,656.00
	BI-WEEKLY	1,613.60	1,695.20	1,776.80	1,858.40	1,940.00	2,021.60	2,103.20	2,184.80	2,266.40	2,348.00	2,429.60	2,511.20	2,592.80	2,674.40	2,756.00
	HOURLY	20.17	21.19	22.21	23.23	24.25	25.27	26.29	27.31	28.33	29.35	30.37	31.39	32.41	33.43	34.45

NOTE: All promotions move up the chart to the proper level to a step with a rate no less than the previous compensation amount.
Pay increases annually moving forward a step. Senior System Administrator and IT Tech positions are Non-Exempt. These figures are rounded.

**CHAVES COUNTY
ROAD AND FLOOD DEPARTMENTS WAGE SCHEDULE
CHART G**

EFFECTIVE DATE: January 8, 2024

EFFECTIVE DATE: January 8, 2024																
Level (RTV) ROAD TECH SUPERVISOR	Pay Type	Step 1	Step 2	Step 3	Step 4	Step 5	Step 6	Step 7	Step 8	Step 9	Step 10	Step 11	Step 12	Step 13	Step 14	Step 15
	(Exempt)	ANNUAL	55,057.60	57,033.60	59,009.60	60,985.60	62,961.60	64,937.60	66,913.60	68,889.60	70,865.60	72,841.60	74,817.60	76,793.60	78,769.60	80,745.60
	BI-WEEKLY	2,117.60	2,193.60	2,269.60	2,345.60	2,421.60	2,497.60	2,573.60	2,649.60	2,725.60	2,801.60	2,877.60	2,953.60	3,029.60	3,105.60	3,181.60
	HOURLY	26.47	27.42	28.37	29.32	30.27	31.22	32.17	33.12	34.07	35.02	35.97	36.92	37.87	38.82	39.77
Level (RFS) ROAD FOREMAN FLEET MAINT SUPERVISOR	Pay Type	Step 1	Step 2	Step 3	Step 4	Step 5	Step 6	Step 7	Step 8	Step 9	Step 10	Step 11	Step 12	Step 13	Step 14	Step 15
	(Exempt)	ANNUAL	46,321.60	47,975.20	49,628.80	51,282.40	52,936.00	54,589.60	56,243.20	57,896.80	59,550.40	61,204.00	62,857.60	64,511.20	66,164.80	67,818.40
	BI-WEEKLY	1,781.60	1,845.20	1,908.80	1,972.40	2,036.00	2,099.60	2,163.20	2,226.80	2,290.40	2,354.00	2,417.60	2,481.20	2,544.80	2,608.40	2,672.00
	HOURLY	22.27	23.07	23.86	24.66	25.45	26.25	27.04	27.84	28.63	29.43	30.22	31.02	31.81	32.61	33.40
Level (RFD) MECHANIC: DEISEL WELDER	Pay Type	Step 1	Step 2	Step 3	Step 4	Step 5	Step 6	Step 7	Step 8	Step 9	Step 10	Step 11	Step 12	Step 13	Step 14	Step 15
		ANNUAL	40,955.20	42,432.00	43,908.80	45,385.60	46,862.40	48,339.20	49,816.00	51,292.80	52,769.60	54,246.40	55,723.20	57,200.00	58,676.80	60,153.60
	BI-WEEKLY	1,575.20	1,632.00	1,688.80	1,745.60	1,802.40	1,859.20	1,916.00	1,972.80	2,029.60	2,086.40	2,143.20	2,200.00	2,256.80	2,313.60	2,370.40
	HOURLY	19.69	20.40	21.11	21.82	22.53	23.24	23.95	24.66	25.37	26.08	26.79	27.50	28.21	28.92	29.63
Level (RMW) MECHANIC: AUTO	Pay Type	Step 1	Step 2	Step 3	Step 4	Step 5	Step 6	Step 7	Step 8	Step 9	Step 10	Step 11	Step 12	Step 13	Step 14	Step 15
		ANNUAL	39,936.00	41,371.20	42,806.40	44,241.60	45,676.80	47,112.00	48,547.20	49,982.40	51,417.60	52,852.80	54,288.00	55,723.20	57,158.40	58,593.60
	BI-WEEKLY	1,536.00	1,591.20	1,646.40	1,701.60	1,756.80	1,812.00	1,867.20	1,922.40	1,977.60	2,032.80	2,088.00	2,143.20	2,198.40	2,253.60	2,308.80
	HOURLY	19.20	19.89	20.58	21.27	21.96	22.65	23.34	24.03	24.72	25.41	26.10	26.79	27.48	28.17	28.86
Level (RMP) PURCHASING OFFICER	Pay Type	Step 1	Step 2	Step 3	Step 4	Step 5	Step 6	Step 7	Step 8	Step 9	Step 10	Step 11	Step 12	Step 13	Step 14	Step 15
		ANNUAL	40,352.00	41,745.60	43,139.20	44,532.80	45,926.40	47,320.00	48,713.60	50,107.20	51,500.80	52,894.40	54,288.00	55,681.60	57,075.20	58,468.80
	BI-WEEKLY	1,498.40	1,552.00	1,605.60	1,659.20	1,712.80	1,766.40	1,820.00	1,873.60	1,927.20	1,980.80	2,034.40	2,088.00	2,141.60	2,195.20	2,248.80
	HOURLY	18.73	19.40	20.07	20.74	21.41	22.08	22.75	23.42	24.09	24.76	25.43	26.10	26.77	27.44	28.11
Level (RM2) OPERATOR II (FLOOD), ROAD MAINTENANCE II VECTOR CTRL., ASST. ENG TECH	Pay Type	Step 1	Step 2	Step 3	Step 4	Step 5	Step 6	Step 7	Step 8	Step 9	Step 10	Step 11	Step 12	Step 13	Step 14	Step 15
		ANNUAL	37,086.40	38,417.60	39,748.80	41,080.00	42,411.20	43,742.40	45,073.60	46,404.80	47,736.00	49,067.20	50,398.40	51,729.60	53,060.80	54,392.00
	BI-WEEKLY	1,426.40	1,477.60	1,528.80	1,580.00	1,631.20	1,682.40	1,733.60	1,784.80	1,836.00	1,887.20	1,938.40	1,989.60	2,040.80	2,092.00	2,143.20
	HOURLY	17.83	18.47	19.11	19.75	20.39	21.03	21.67	22.31	22.95	23.59	24.23	24.87	25.51	26.15	26.79
Level (RMI) OPERATOR I (FLOOD) ROAD MAINTENANCE I	Pay Type	Step 1	Step 2	Step 3	Step 4	Step 5	Step 6	Step 7	Step 8	Step 9	Step 10	Step 11	Step 12	Step 13	Step 14	Step 15
		ANNUAL	32,780.80	33,966.40	35,152.00	36,337.60	37,523.20	38,708.80	39,894.40	41,080.00	42,265.60	43,451.20	44,636.80	45,822.40	47,008.00	48,193.60
	BI-WEEKLY	1,260.80	1,306.40	1,352.00	1,397.60	1,443.20	1,488.80	1,534.40	1,580.00	1,625.60	1,671.20	1,716.80	1,762.40	1,808.00	1,853.60	1,899.20
	HOURLY	15.76	16.33	16.90	17.47	18.04	18.61	19.18	19.75	20.32	20.89	21.46	22.03	22.60	23.17	23.74
Level (RTS) TIRE SPECIALIST	Pay Type	Step 1	Step 2	Step 3	Step 4	Step 5	Step 6	Step 7	Step 8	Step 9	Step 10	Step 11	Step 12	Step 13	Step 14	Step 15
		ANNUAL	31,200.00	32,323.20	33,446.40	34,569.60	35,692.80	36,816.00	37,939.20	39,062.40	40,185.60	41,308.80	42,432.00	43,555.20	44,678.40	45,801.60
	BI-WEEKLY	1,200.00	1,243.20	1,286.40	1,329.60	1,372.80	1,416.00	1,459.20	1,502.40	1,545.60	1,588.80	1,632.00	1,675.20	1,718.40	1,761.60	1,804.80
	HOURLY	15.00	15.54	16.08	16.62	17.16	17.70	18.24	18.78	19.32	19.86	20.40	20.94	21.48	22.02	22.56

Note: All promotions move up the chart to the proper level to a step with a rate no less than the previous compensation amount. Demotions move straight down. Pay increases annually moving forward a step. Road Tech Supervisor, Foreman, and Fleet Maintenance Supervisor are Exempt positions.